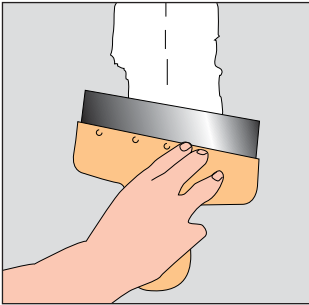


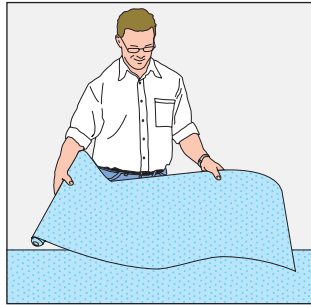
# Hanging instructions – QuickUp wallpapers



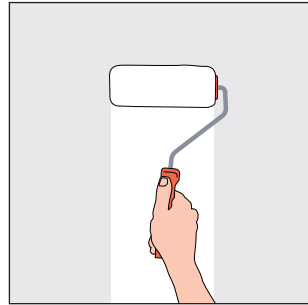
## Paste the wall!



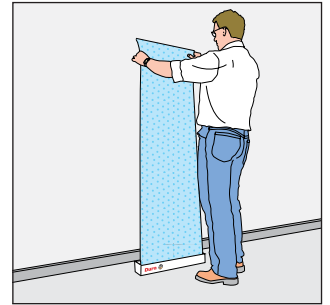
1. Before you hang the wallpaper, make sure the surface is even. Tear off any loose pieces. Fill uneven parts and wallpaper joints with filler.



2. Unroll two rolls side by side to see how the pattern matches. Ensure that they are without any visible defects.



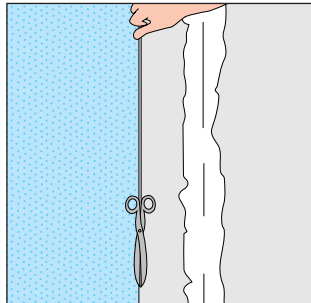
3. Apply glue to the wall corresponding to the width of 2-3 lengths, or about 1-1.5m. Use a roller, or a brush where it is difficult to get at with a brush.



4. Put the roll into the QuickUp box and pull up the first length.



5. Fix the length high enough up the wall so that a piece of the length is above the line on which you intend to trim.



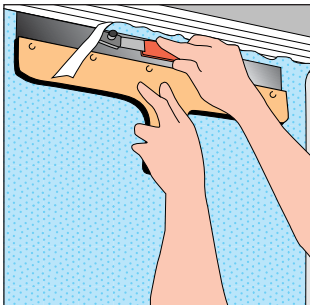
6. Use a length of string attached to something heavy such as a pair of scissors to check that the length really is hanging straight.



7. Even out the wallpaper and remove the bubbles with the papering tool. Be careful at the edge of the length in order not to get any glue on the tool.



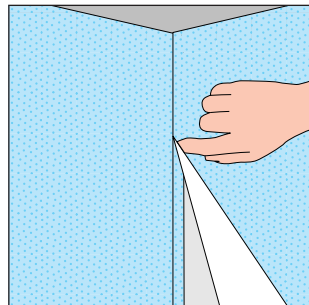
8. Trim the section near the floor. Use the large spatula as a guide. Change the blade often, a dull blade will tear the wallpaper.



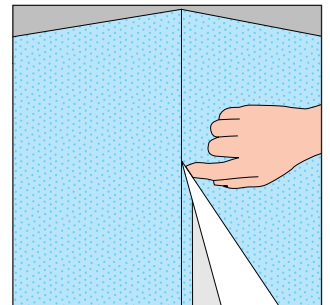
9. Trim the section near the ceiling. Use the large spatula as a support.



10. Butt joint lengths (do not overlap). Remove bubbles in the same way as before, and be particularly careful at the joints.



11. In a corner you have to cut the length. Apply glue to the wall, about the width of the wallpaper strip. Let the first part of the length pass into the corner with an overhang of about 2cm. **Inside corners:** Hang the next length with an overlap all the way into the corner. Apply some glue onto that section of the wallpaper that ends up under the overlap. Wipe off any excess glue with some water and a sponge.



12. **Outside corners:** Hang the next length with an overhang of about 5mm onto the next wall to avoid tearing it if you should brush against the corner when passing. Check that the length is hanging straight. Wipe off any excess glue with some water and a sponge.

### Do you have everything you need?

- Paste
- Roller and/or brush
- Razor knife
- Plumb line
- Folding rule
- Ruler or spatula
- Metal ruler with double cutter
- QuickUp box
- Plastic smoother
- (Wallpaper board)

Duro QuickUp wallpaper are manufactured in a dimensionally stable and environmental friendly material. You can of course paste the back of the wallpaper as you do traditionally and then hang the lengths on the wall. The wallpapers nor swell neither shrink. When you hang a border you paste the back of the border. Good ventilation is important after hanging your wallpapers.

## Duro.

Duro Sweden AB, Box 907, 801 32 Gävle

[www.durosweden.se](http://www.durosweden.se)

[headoffice@durosweden.se](mailto:headoffice@durosweden.se)